



AC2000 Standard Edition

Access Control and Security Management System

AC2000 SE (STANDARD EDITION) is a powerful and fully integrated access control, alarm processing and photo badging system. With CEM manufacturing both the system hardware and software, AC2000 SE can be further customised to meet client's unique requirements... making it one of the most comprehensive security management systems available.

When security is of paramount importance...

AC2000 SE (Standard Edition) has been successfully installed at some of the largest facilities around the world including amongst others, corporate premises, oil refineries, ports and universities. Continuously developed to meet the most difficult of security needs, AC2000 SE provides a flexible and highly stable solution for installations where security is of paramount importance.

SYSTEM FEATURES

- Highly stable Unix or Linux operating system
- Web interface to CDC server for remote diagnostics and reporting
- Distributed intelligence for central and remote configuration
- Virtually unlimited expansion
- Intelligent card readers with on-board database
- Supports Ethernet-ready controllers and readers
- Windows® based operator workstations
- Failover & Automatic Server backup and archive
- Supports all current read head technology and multiple technology per system
- Supports CEM portable hand held readers
- ODBC Compliant
- Advanced transaction / Alarm Reporting
- 'Card Swipe' option for system log on
- Unlimited User Definable fields
- Web browser remote diagnostics of controllers
- External systems integration
- Seamless integration with External Systems; CCTV, DVR, Intercom, Intruder Alarm

And much more...

The AC2000 SE Server, running either Unix or Linux operating system, provides a highly sophisticated level of power and system resilience, whilst Windows® based operator workstations present the user with a familiar, easy to use front-end. AC2000 SE not only utilizes CEM's advanced range of hardware products including intelligent card readers and Ethernet-ready controllers, but also offers compatibility with read heads from third party manufacturers.

System Resilience

The use of distributed intelligence at all levels of the system including the use of card readers with their own database adds to the overall resilience of AC2000 SE.

In the unlikely event of communications being lost, each sub system continues to operate without loss of security or transaction information.

Information Processing

Alarm events, equipment usage and cardholder movements are registered on the central server in real time. This information can be used for advanced reporting purposes or can be sent to graphical alarm displays for graphical representation.

Virtually Unlimited Expansion

With the simple addition of CEM Ethernet-enabled controllers or card readers to the network, the system can be easily expanded to meet the most demanding applications.

Central/Remote Configuration

AC2000 SE can broadcast messages to card readers to open doors in emergency situations or to switch lighting, heating or similar external systems at pre-defined times. Built-in intelligence also allows the readers to be programmed and managed remotely to change functional parameters and receive updates.

Intelligent Card Readers

As well as providing sophisticated door modes such as Turnstile, Control Post and Validation mode, CEM's advanced range of card readers come with an LCD display and on-board database offering intelligence at the door. As such the reader will continue to operate and store transactions offline, ensuring zero system downtime.





Fingerprint Card Reader

Featuring a controller, card reader and fingerprint solution in one, the S610f fingerprint reader is a fully integrated biometric and access control reader that is used to control access where an additional biometric layer of security is required. Fingerprint templates are captured on the AC2000 enrolment station at the same time as cardholders' personnel details and image and then saved to the AC2000 Server rather than just an ID smart card. Cards can then be issued and biometric templates

distributed via the access control network - eliminating the need for an additional biometric cabling network and software enrolment process.

Portable Card Readers

The unique S3020 portable reader range enhances the security capabilities of the AC2000 SE system. The readers can be used for cardholder validation at remote sites or temporary entrances that have no power, or can be used as a mobile device for random checks within pre-defined zones.

EXTENDED OPERATIONAL APPLICATIONS INCLUDE...

- Central Monitoring (Alarm Event Display)
- Zone Monitor
- Integrated Photo Badging (CEM VIPPS System)
- Guard Tours
- Fully Integrated Biometric Enrolment
- Rolling Transaction Display
- Visitor Management
- Vehicles Management
- Elevator Control
- Database Partitioning
- Time & Attendance Reporting
- Failover – Dual redundant server
- Integration with third party systems
- Standard System Link
- Third party API (Application Programming Interface)

All your security needs covered...

CEM Systems understands that the security needs of all sites are different. By manufacturing both the software and system hardware CEM can offer a customised, integrated solution that allows customers to manage their unique security situation. AC2000 SE comes with a suite of applications creating a powerful operational solution.

Integration

An advanced level of integration is provided using industry standard interfaces to link with third party systems. AC2000 SE can typically integrate with deployed subsystems such as Intruder, Fire, CCTV, DVR (Digital Video Recording), NVR (Network Video Recorder) Intercoms, Perimeter Detection systems and more.

Guard Tours

The Guard Tour option allows the user to specify a sequence of readers that the guard must visit within prescribed time periods. Failure to do so will result in the creation of an alarm. The software also gives the option to temporarily suspend and resume a tour.



Alarm Event Display (AED)

AED provides a complete graphical and textual representation of the status of the entire system. AED responds to all alarm situations in real time providing a dynamic on-screen interface to external CCTV systems with facilities for CCTV switching, remote door broadcasting and audio output in response to alarm events.

Integrated Photo Badging (VIPPS)

The CEM Visual Imaging Pass Production System (VIPPS) is fully integrated with AC2000 SE allowing users to produce permanent and temporary ID badges. VIPPS can be used to enrol fingerprint biometric templates onto the AC2000 SE system.

Zone Monitor

The Zone Monitor application allows a real time view and counter of all cardholder(s) movements in a selected zone. Providing information on who is present on site for safety and security reasons.

Rolling Transaction Display

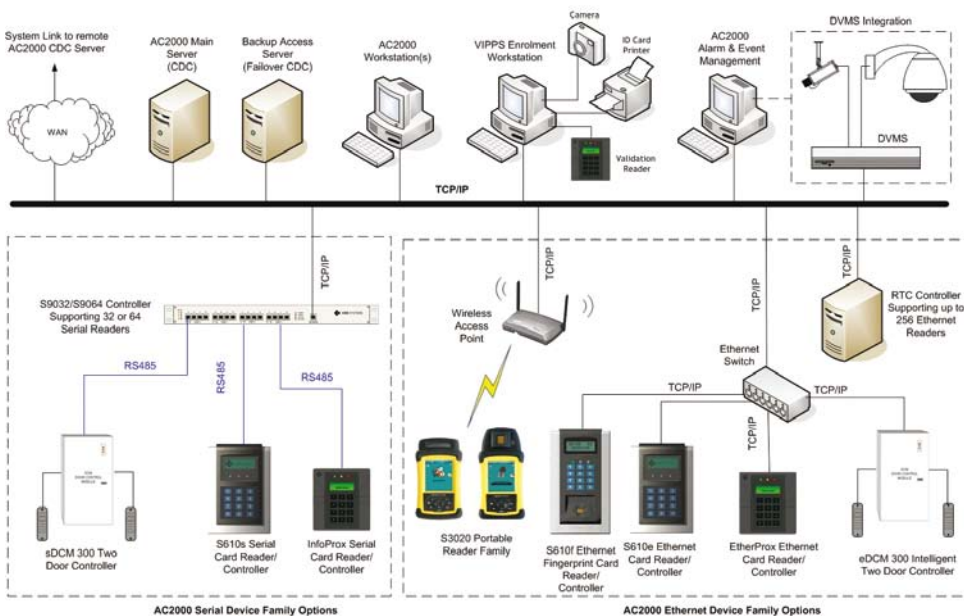
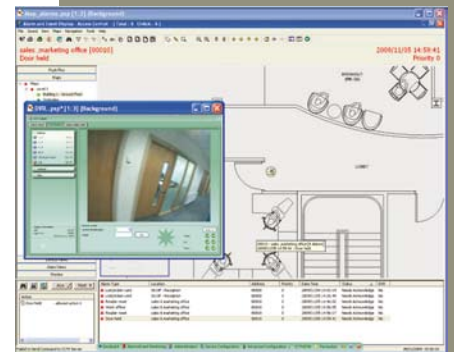
The Rolling Transaction Display feature provides a split screen view of real-time transaction outcomes and alarms. When a card is swiped at a reader, the cardholders image & associated personnel details are displayed on an operator PC. This allows guards to perform a visual security check that the approved person is using the card.

Visitor Management

The Visitors application provides a powerful tool to monitor and control access for temporary cardholders (visitors) with the ability to print temporary visitor ID cards.

Biometrics Support

AC2000 SE integrates with third party biometric systems including hand geometry, iris recognition and fingerprint verification. The CEM fingerprint reader also provides a fully integrated fingerprint biometric solution without the need to use third party biometric equipment and software.



CEM Systems Ltd
195 Airport Road West
Belfast
BT3 9ED
Northern Ireland

Tel: +44 (0)28 9045 6767
Fax: +44 (0)28 9045 4535
email: cem.sales@tycoint.com